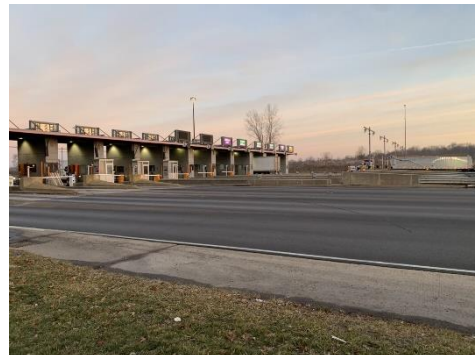




Press Release

## The Indiana Toll Road Selects A-to-Be as its Partner for Implementing its Next Generation Toll Collection System

Downers Grove, IL (24 May, 2021) – A-to-Be announced today that it has been awarded by ITR Concession Company LLC (ITRCC) a multi-year contract to design, build, implement and maintain a new Toll Collection System for the Indiana Toll Road (ITR). The ITR extends 157 miles across northern Indiana, from the Ohio to the Illinois state lines, connecting Chicago to the Eastern Seaboard. The ITR has been in operation since 1956 and is managed by ITRCC, which has provided more than \$400 million in infrastructure improvements to ITR drivers since 2016.



ITR tolling plaza at Eastpoint, Indiana

The new Toll Collection System will provide the ITR with a reliable and high-performing method of toll collection at a variety of Toll Lane configurations and locations. A-to-Be will also update ITR's roadside equipment and provide new Automated Toll Payment Machines (ATPMs) and contactless, cash-free payment machines, which will accept payments via smartphones and smartwatches as well as via credit and debit cards with tap to pay options. Both the ATPMs and contactless payment machines are

PCI-compliant, providing ITR drivers with industry-leading security and data protection for credit card transactions.

The initial implementation phase of this project commenced in April 2021 and will last until September 2022. Following this phase, A-to-Be will continue to provide on-going operations and maintenance services.

"We are excited to partner with A-to-Be to refresh our in-lane toll collection system" said Nanette Harrell, Chief Information Officer of ITR Concession Company. "This new system is the next in a long line of investments we have made to improve the ITR, and will provide customers with a streamlined tolling and travel experience."

Luís Nunes, A-to-Be’s U.S. CEO, stated that “We are very pleased and committed to work with ITRCC in this very significant project. Our experienced teams will work side-by-side with ITRCC to provide Indiana Toll Road with a one-of-a-kind Toll Collection System by supplying a best-in-class solution, supported by an open, cloud-based and flexible architecture that allows scalability and future reconfigurations with minimal investment. The new system will enable ITRCC to serve its customers with reliable and safe journeys through highly efficient operations, supported by automated monitoring and management tools.”

## About the Indiana Toll Road

In operation since 1956, the Indiana Toll Road stretches 157 miles across the northernmost part of Indiana from Ohio to the Illinois state line, linking Chicago with the largest cities on the eastern seaboard. The Indiana Toll Road - managed by ITR Concession Company LLC (ITRCC) - and its nearly 300 employees are proud to operate a safe and efficient roadway while providing high-quality customer service to serve thousands of patrons every day. ITRCC is indirectly owned by a number of shareholders including, primarily, IFM Investors, which is a uniquely-structured global fund manager with a strong track record as a responsible steward of some of the world's biggest transportation infrastructure assets.

## About A-to-Be

A-to-Be USA, LLC, based out of Downers Grove, IL, is the U.S. subsidiary of Portugal-based A-to-Be – Mobility Technology, SA (part of the Brisa Group) responsible for developing and delivering solutions to mobility service operators. As a subsidiary of the European tolling concessionaire Brisa, A-to-Be is a 100 % tolling and mobility technology company with products specifically designed for this industry. For over 40 years, the company has provided leading tolling, traffic management, smart cities, and revenue assurance solutions across Europe and the United States. A-to-Be processes over 1 billion tolling transactions and 30 million multi-service mobility transactions annually, managing more than 7 million customer accounts.

For more information, please visit [www.a-to-be.com](http://www.a-to-be.com)

**A-to-Be®**  
**Mobility-Beyond**

### Press Office

**Franco Caruso**

+351 966 918 322

[franco.caruso@brisa.pt](mailto:franco.caruso@brisa.pt)

**Luís Nunes**

+351 933 803 553

[luis.nunes@a-to-be.com](mailto:luis.nunes@a-to-be.com)